

MSc SUSTAINABLE & IMPACT FINANCE

KEDGE
BUSINESS SCHOOL



Your values are your biggest asset

HIGHLIGHTS

- Support ecological values in the financial industry
- A cutting-edge and innovative curriculum
- Experiment with a privileged network

OVERVIEW

LANGUAGE: English

CAMPUS: Paris

INTAKE: September

FORMAT: Full-time

DOUBLE DEGREE: MSc and diploma recognised by the Ministry of Higher Education and Research

3rd

Eduniversal 2025
French ranking
"Responsible Finance /
Green Finance"



CURRICULUM

Access: 3-year bachelor's degree

Access: 4-year bachelor's degree

PATHWAY COURSE

MASTER OF SCIENCE

SEMESTER 1

- Strategic thinking
- Financial performance
- Data management
- Generative bootcamp (artificial intelligence)
- Public speaking
- Visual communication & sustainable impact

SEMESTER 2

- Business & socio-ecological transitions
- Sustainable environment for organisations
- Team management
- Human & AI collaboration
- Business & climate change
- Open Innovation Challenge (corporate project)

PRE-SPECIALISATION COURSES

- Capital market
- Sustainable & Impact finance certificate
- Fundamentals of corporate finance

+ ADDITIONAL CONTENT

- 4-month internship (in France or abroad) or academic partnership

BLOCK 1

ECOLOGICAL, ECONOMIC AND FINANCIAL REALITIES

- Living in the Anthropocene - opening conference
- Energy and climate issues
- Biodiversity challenges
- Anthropology of finance
- Emerging markets finance

BLOCK 2

PROMOTING ECOLOGY AND IMPACT IN FINANCIAL REALITIES

- Sustainable governance
- Sustainable reporting & data
- Climate-related financial risks
- Sustainable fund strategies
- GSS bonds - buy-side perspective
- GSS bonds - sell-side perspective
- Microfinance institutions and social performance
- Capital investment and impact investing

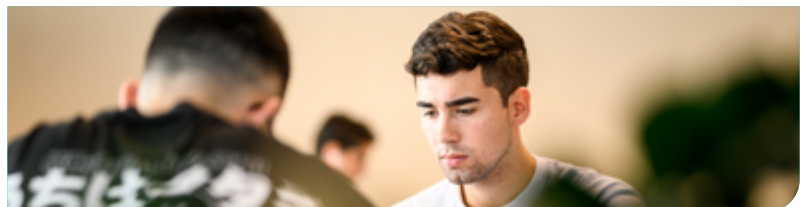
BLOCK 3

IMAGINING DESIRABLES ECOLOGICAL FUTURES

- Improbable
- Ecological accounting
- Sustainable monetary systems
- Alternative ecological money
- "Make Your Impact" challenge
- Financing biodiversity
- Technological change & climate change

+ ADDITIONAL CONTENT

- Sustainability research methods
- "Prepare your master thesis" seminar
- "Meet your master thesis tutor" seminar
- Study trip
- 4- to 6-month business internship



CAREER OPPORTUNITIES

PROSPECTS

- Integrated analyst (ESG, green, climate, social, biodiversity...)
- Sustainable / responsible / SRI portfolio manager
- Impact investor in private equity funds and venture capital firms
- Entrepreneurs in ecological and social projects / startups
- Green banker (expert in green and sustainable bonds origination and structuration, in green and sustainable loans...)
- Consultant in sustainable finance strategy and sustainable regulation
- Expert in sustainable reporting and information disclosure
- Social / environmental auditor in Big Four or specialised auditing firms
- Green Data analyst / scientist
- Policy or advocacy analyst / officer in NGOs or asset management companies

NETWORK & PARTNERS

A2 Consulting, AG2R La Mondiale, Agence Française de Développement (AFD), Amundi, AXA Investment Managers, BackBone, Banque des Territoires, BNP Paribas, Caisse des dépôts, CANDRIAM, Carbone 4, CDC Biodiversité, Citizen Capital, Crédit Agricole CIB, Deloitte, Ecofi, Edmond de Rothschild Asset Management, ERAFP, EthiFinance, EY, Finance Watch, Forum pour l'Investissement Responsable (FIR), Iceberg Data Lab, Institut de la Finance Durable, Institut Louis Bachelier, Institute for Climate Economics (I4CE), Ircantec, ISS ESG, La Financière Responsable, LBPAM, Mirova, Moody's ESG, Natixis CIB Green Hub, Novethic, Ostrum Asset Management, Proxinvest, Reclaim Finance, Scope Group, Société Générale CIB, UN Principles for Responsible Investment (UNPRI), Vertigo Lab, Weefin, Wellers Impact, etc.



€ 50,000
average first salary



89% of students
secure employment within
6 months of graduation



1 privileged partner
(CANDRIAM)
and a network of more
than **100** companies

ABOUT KEDGE

This MSc programme is offered in Paris, on a 6,400 m² campus located in the Lumière building, spanning two levels and featuring 25 brain bubbles and an 80-seat amphitheatre. Student life is enriched by numerous amenities, including diverse dining options, sports facilities, and cultural spaces directly on campus. Situated in a vibrant business district near Bercy Village and the Bibliothèque nationale de France, with easy access to public transport, the Paris campus offers an ideal setting for both academic excellence and personal growth.

KEDGE is a private, not-for-profit higher education institution under state contract



PARIS
CAMPUS



1st

French School
for Research
in Business
Administration,
Shanghai
Ranking 2024

90,000
alumni around
the world

300
business
partners

218

full-time
professors,
39%
of whom are
international

ADMISSION



APPLICATION PROCESS

APPLY IN JUST A FEW STEPS:

- create your account
- upload your documents
- and track your admission progress in real time on join.kedge.edu

NEED HELP OR HAVE A QUESTION?

Our student advisers are here to support you every step of the way

Applying as an international student?

CONTACT

international@kedgebs.com

Based in France or applying as a French student?

CONTACT

ms.msc@kedgebs.com

For details on programme content, tuition fees, admissions, scholarships, and funding options, please scan

